

Yavapai
Library
Network
Monthly Report



December
2022

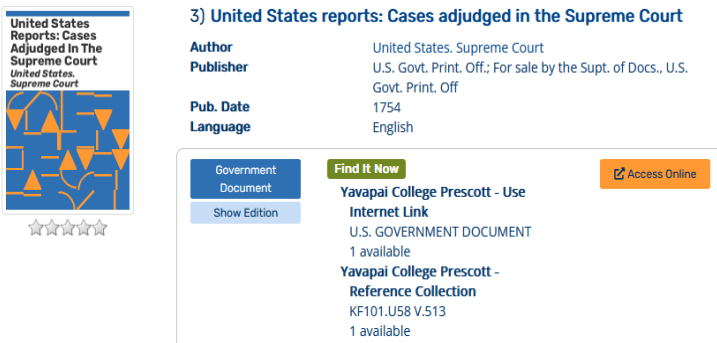
MANAGER'S LOWDOWN

Dear YLN Stakeholders,

It is with a heavy heart that I am preparing this month's letter for the monthly report. That is because it means Valerie Burns has now officially retired. On the upside, Valerie and David are having an absolutely great time in Scotland! So, hear goes the news for the last month.

First of all, welcome to 2023! We are moving right along with our RFP process for the ILS. Missy Mudry is working on the finishing touches as well as working with our attorney Michael Cordrey and Anita Case with the Finance office to make sure all of the many rules and laws are being followed. The technical specifications have been completed and will be placed into the overall RFP. Once fully integrated, the YLN ILS Migration Committee will take another whack at the document to ensure our needs are being met. Then, we'll send it out and wait for vendor responses. A very exciting time!!

Also, many thanks to Chanel for upgrading our helpdesk software and thanks for all of you for your patience throughout this process. Chanel has also been hard at work implementing some new features into our online catalog which will make online resources easier to find. I've included her example for how the new Access Online button looks:



3) **United States reports: Cases adjudged in the Supreme Court**

Author United States. Supreme Court
Publisher U.S. Govt. Print. Off.; For sale by the Supt. of Docs., U.S. Govt. Print. Off.
Pub. Date 1754
Language English

Government Document **Find It Now** **Access Online**

Show Edition

Yavapai College Prescott - Use Internet Link
U.S. GOVERNMENT DOCUMENT
1 available

Yavapai College Prescott - Reference Collection
KF101.U58 V.513
1 available

We've seen a lot of changes over the last year including a new catalog and switching from an on-premises version of

Symphony to a Software-as-a-Service (SaaS) version of Symphony. Hopefully you have found these changes to be beneficial to patrons and staff. I look forward to seeing what 2023 will bring including the conclusion of an ILS search and the hiring of a new person to run the YLN. Exciting times are ahead!

Cheers!

Corey

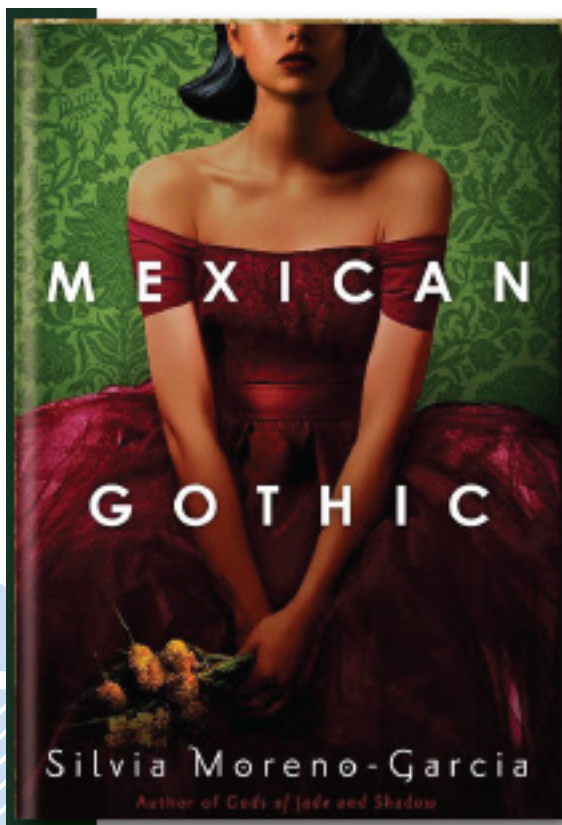


Yavapai College Library - Prescott

The Literary Southwest, at Yavapai College's Boyd Tenney Library, will be hosting a book talk and signing with Silvia Moreno-Garcia. Mexican by birth, Canadian by inclination. Silvia Moreno-Garcia is the author of a number of critically acclaimed novels, including *Gods of Jade and Shadow*, *Mexican Gothic*, and *Velvet Was the Night*. She has an MA in Science and Technology Studies from the University of British Columbia. She lives in Vancouver, British Columbia.

The Spring 2023 Literary Southwest program is in-person (registration required) and presented free via YouTube livestream through the Yavapai College website: www.yc.edu/literarysw.

February 24, 2023 at 7 pm



PRIORITIES

Help Desk

A help desk request, or work order, is the submission of a problem that one encounters during the normal operation of a YLN service. Requests are generally submitted via e-mail to help@yln.info. If a request is submitted via telephone, then a YLN staff person will create the request for the submitter. Help desk requests will always be our highest priority because in some cases a member library employee cannot complete a work function until the issue is resolved.

Total requests submitted: 31

Total requests resolved: 20

Total unresolved requests opened this month: 11

Total requests still open: 18



STATISTICS: HOLDS

HOLDS -December 2022					
Hold Inactive Reason	CANCELLED	EXP_ONSHLF	EXPIRED	FILLED	Total
Pickup Library	Number of Holds	Number of Holds	Number of Holds	Number of Holds	Number of Holds
AJS	2	7		22	31
ASH	22	3		272	297
BAG	7	27		144	178
BCC	58	23	1	459	541
BEA	42	42	1	301	386
BMHS	1	1		1	3
BMMS				1	1
CJES	1	2			3
CLA	6	12		125	143
CON	52	11		277	340
COR	21	14		272	307
CRK	3		1	65	69
CSES	3				3
CTW	393	227	5	2,686	3,311
CVCL	159	73	10	994	1,236
CVPL	102	61	3	1,121	1,287
CVUSD		2		4	6
DHL	26	12		125	163
ERU	6	2		71	79
GES				6	6
GMMS				8	8
HES	28	3		17	48
JER	1	7		48	56
LES	2			1	3
MAY	42	6		124	172
MES				1	1
MUHS				2	2
MVES	3			1	4
PAUL	34	12		459	505
PCL		5		8	13
PCM				1	1
PHS				1	1
PPL	1,541	763	32	9,452	11,788
PVA2	310	60	3	1,428	1,801
PVPL	568	451	5	4,707	5,731
SED	347	216	11	2,378	2,952
SEL	54	33		343	430
SPR	9	25		146	180
SUSD	2				2
TCP	1			3	4
THS	9			8	17

STATISTICS: HOLDS

Hold Inactive Reason	CANCELLED	EXP_ONSHLF	EXPIRED	FILLED	Total
Pickup Library	Number of Holds	Number of Holds	Number of Holds	Number of Holds	Number of Holds
VOC	128	107	12	1,428	1,675
WIL	3	14		252	269
YAR	22	9		320	351
YCFLD	8	2		10	20
YCP	23	6		75	104
YCP2				1	1
YCV	5			47	52
YCV2	3		4	19	26
YLN	1			8	9
Total	4,048	2,238	88	28,242	34,616

STATISTICS: TRANSITS

ITEMS TRANSITED - DECEMBER 2022																	
Station Library	Total	AJS	ASH	BAG	BCC	BEA	BMHS	BMMS	CJES	CLA	CON	COR	CRK	CTW	CVCL	CVLAB	CVPL
Total	21,838	27	238	128	442	370	2	1	3	133	254	257	49	2,119	1,014	1	963
AFSD	3																
AJS	55													6	2		
ASH	184			2	2	3					2		1	20	6		4
BAG	426		2		9	3				2	12	5	1	35	21		15
BCC	352		8	2		13				4	3	10		31	10		9
BEA	203	1	3	2	1					2	2	1		14	10		7
BMHS	14				1										1		1
BMMS	7	1				1								1			
CJES	13					1								2			
CLA	197		3	2	7	1					3			18	3		4
CON	133			2	3	2				1		2		14	4		9
COR	186		5	1	5	7				3	4			13	4		8
CRK	92		3		5	2					1	2		6	4		3
CSES	14			3										2	1		
CTW	2,533	1	24	13	58	31				6	34	25	3		147		122
CVCL	574		3	4	11	6				2	3	3	1	65			28
CVHS	39				1	4					1			3	1		2
CVLAB	24	1		2							2			2			1
CVPL	1,179		8	8	27	25				8	14	11	2	138	48		
CVUSD	111		2	2		1							1	6	3	1	7
DEL	7																
DHL	178		4	1	2	3				1	1			21	7		3
ERU	171				1	1					1			14	10		7
GES	36	1		1										2			1
GHMS	13			1										1			1
GMMS	23				1									3	3		1
HES	16			1						1				1			2
JER	196		1			3						1		10	10		3
LES	40			2	1		1							9	2		2
LTS	15													1	1		2
MAY	297		6	2	6	7				4	1	6		23	13		12
MES	22		1		1	1								2			
MUHS	59						1						1	3			1
MVES	30													5			2
ORME	19													2			2
PAUL	165		2	5	1	2			1			1		14	4		6
PCL	229				2	7				2	2			25	10		1
PHS	47				2	2			1	1				9	3		2
PMH	12								1					1			1
PPL	4,635	9	78	25	100	88		1		39	75	72	23	696	271		339
PVCV	1																
PVPL	2,613	8	36	21	67	41				7	19	42	1	261	149		125
SED	2,484	3	19	12	37	39				19	22	16	4	272	77		67
SEL	198		1	2	2	7					2	2	1	19	9		12
SPR	265		1		9	2				1	2	8		16	11		11
STX	115										1	5		10	3		7
SUSD	8																
SVES	6																1
THS	7																
VOC	331	1		2	4	8				4	3	5	1	29	8		11
WIL	172		1	1	6	1				2		2		14	8		2
YAR	396		10		9	14				4	9	9	1	28	22		13
YCP	809		2	6	22	11				7	1	4	2	69	37		24
YCV	1,883	1	15	3	39	33				13	34	25	6	183	90		82
YLN	1														1		

STATISTICS: TRANSITS

ITEMS TRANSITED - December 2022																			
Station Library																			
Item Library	CVUSD	DHL	ERU	GES	GMMS	HES	HMS	JER	LES	LVES	MAY	MES	MUHS	MVES	PAUL	PCL	PHS	PMH	
Total	7	133	70	9	12	22	7	59	1	1	126	2	2	3	452	12	1	1	
AFSD																			
AJS																			
ASH		2													17				
BAG		2	2			1								2	12				
BCC		3	1								1				21				
BEA	2	2		1											9				
BMHS																			
BMMS																			
CJES																			
CLA		3	2	1		2									17				
CON		2				1					2				16				
COR		1	1												7				
CRK	1	2													5				
CSES																			
CTW		14	3		2	1		2			8				31				
CVCL	1		1			1		6			3				5				
CVHS																			
CVLAB															1				
CVPL		8	2	1	1	2		1			6				13				
CVUSD		1			1						1				1	1			
DEL							7												
DHL											1				23				
ERU		1						2			2				6	2			
GES																			
GHMS														1					
GMMS																			
HES																			
JER															1				
LES																			
LTS					1							1							
MAY		2													26			1	
MES						2													
MUHS		1	1	1															
MVES																			
ORME																			
PAUL		1									3								
PCL		1						2					1						
PHS																			
PMH				2		1		1		1									
PPL	1	39	33	1	3	6		18			46				72	3			
PVCV													1						
PVPL		14	6	1	3	2		8			24				37	1			
SED	1	12	7					6			5				20	1	1		
SEL		1									1				16				
SPR	1	1									4				32				
STX						2					9								
SUSD																			
SVES																			
THS																			
VOC										1					3				
WIL		1	1			1									15	1			
YAR		2	2	1	1			1			4				24				
YCP		6	2					3			2				13	1			
YCV		11	6					9			4		1		9	2			
YLN																			

STATISTICS: TRANSITS

ITEMS TRANSITED - DECEMBER 2022																
Station Library																
Item Library	PPL	PVA2	PVPL	SED	SEL	SPR	TCP	THS	VOC	WIL	YAR	YCFLD	YCP	YCV	YLN	
Total	5,703	105	4,591	1,779	314	193	3	8	1,412	351	304	5	74	60	15	
AFSD	1		1	1												
AJS	21	1	17	8												
ASH	43		49	9	2	8			4	1	7			2		
BAG	123	3	109	26	10	7			15	6	1				2	
BCC	90	1	78	24	6	3			20	7	5		1		1	
BEA	61	2	53	11		4			8	7						
BMHS	3	1	2	3					2							
BMMS	1		3													
CJES	4		5					1								
CLA	45	1	48	15	2	9			3	2	5	1				
CON	25	2	29	10	1				5	1	2					
COR	40	1	50	14	5	3			4	3	3		2	1	1	
CRK	19		21	7	1	1			5	2	1			1		
CSES	3	1	2	1	1											
CTW	918	12	618	192	37	23		1	132	32	25		7	9	2	
CVCL	184	4	145	53	2	7			24	7	4		1			
CVHS	13		6	5					3							
CVLAB	6		8			1										
CVPL	401	1	279	83	8	8		1	43	11	16		2	3		
CVUSD	36		27	14					5	1						
DEL																
DHL	40		41	16	2	6		1	1	1			2	1		
ERU	63		23	25	2				8	1			2			
GES	13		13	3						1				1		
GHMS	4		4		1											
GMMS	5	1	7	2												
HES	4		5	1				1								
JER	87		39	24	5				6	4	2					
LES	12		7	3					1							
LTS	4		4	1												
MAY	61		67	19	3	4			12	13	9					
MES	6	1	8													
MUHS	22		17	2					7	1	1					
MVES	9	1	9	1	2	1										
ORME	5		1	4	1				3				1			
PAUL	53	1	35	10	2	5			9	4	3		1	2		
PCL	75		41	42		1			13		1			3		
PHS	11	1	7	5					3							
PMH	2		2													
PPL		20	1,362	509	87	44	2	1	351	82	101		24	10	4	
PVCV																
PVPL	1,197	32		203	45	23	1	2	138	44	38	1	9	6	1	
SED	762	9	523		23	5			431	44	31		8	7	1	
SEL	52	1	48	8		3			6	3	2					
SPR	61	1	71	13	4				2	6	7		1			
STX	22		20	16	3	13				2	2					
SUSD	3		4						1							
SVES	1	1	2						1							
THS			5	2												
VOC	86	1	46	111	2					1	4					
WIL	44		43	16		3			8		1		1			
YAR	99	1	76	23	10	6			10	15					2	
YCP	285	1	152	81	7				42	10	5			14		
YCV	578	3	359	163	40	5			86	39	28	3	12		1	
YLN																

STATISTICS: DISCARDED & ADDED

DISCARDS - DECEMBER 2022	
Station Library	Library Use Transactions
AJS	8
ASH	2
BAG	47
BCC	13
BEA	19
BMHS	1
CLA	1
CRK	14
CTW	790
CVCL	87
CVHS	65
CVLAB	1
CVPL	276
CVUSD	577
ERU	95
GES	23
GHMS	232
GMMS	1
HMS	1
JER	1
LES	38
MES	576
PAUL	44
PPL	1,320
PVPL	447
SED	460
SUSD	2
THS	750
VOC	38
WIL	39
YCFLD	15
YCP	181
YCV	374
YLN	1
Total	6,539

ITEMS ADDED - DECEMBER 2022	
Item Library	Total Copies
AFSD	30
AJS	12
ASH	43
BAG	132
BCC	94
BEA	42
BMHS	1
CJES	128
CLA	32
CON	23
COR	33
CRK	12
CSES	28
CTW	525
CVCL	354
CVLAB	123
CVPL	192
CVUSD	163
DEL	11630
DHL	52
ERU	83
GES	38
GMMS	67
HES	12
HMS	20550
JER	18
LES	140
MAY	21
MES	11
MUHS	1
PAUL	76
PCL	9
PHS	22
PMH	1
PPL	930
PVPL	932
SED	508
SEL	31
SPR	20
SUSD	486
SVES	68
THS	33
VOC	82
WIL	18
YAR	113
YCP	15
YCV	128
YLN	42
Grand Total	38104

TOTAL ITEMS - DECEMBER 2022	
Item Library	Total Copies
AFSD	4,142
AJS	13,842
ASH	5,372
BAG	15,590
BCC	11,821
BEA	12,320
BMHS	30,049
BMMS	7,898
CJES	11,194
CLA	9,159
CON	6,345
COR	6,624
CRK	3,458
CSES	4,112
CTW	89,356
CVCL	29,965
CVHS	16,094
CVLAB	4,945
CVPL	52,624
CVUSD	28,843
DEL	11,628
DHL	5,688
ERU	28,034
GES	12,249
GHMS	9,792
GMMS	9,707
HES	8,654
HMS	20,549
JER	14,299
LAW	1,784
LES	13,055
LTS	13,385
LVES	7,826
MAY	10,378
MES	4,889
MUHS	5,271
MVES	9,715
ORME	9,096
PAUL	7,189
PCL	35,076
PHS	11,552
PMH	9,192
PPL	131,299
PVCV	4,634
PVPL	88,772
SED	64,653
SEL	6,920
SHM	8,054
SPR	5,312
STX	832
SUSD	6,524
SVES	7,148
TCP	1,242
THS	10,855
VOC	4,829
VVAC	3,072
WIL	5,368
YAR	9,796
YAV	4,122
YCC	2,157
YCFLD	80
YCP	60,383
YCV	47,771
YLN	49
Total	1,096,633

STATISTICS: USERS

NEW USERS - DECEMBER 2022	
User Library	Number of Users
AFSD	2
AJS	2
ASH	8
BAG	8
BCC	12
BEA	2
BMHS	5
BMMS	1
CJES	1
CLA	4
CON	8
COR	8
CSES	6
CTW	133
CVCL	55
CVHS	1
CVPL	39
CVUSD	7
DEL	4
DHL	8
ERU	3
GES	4
GHMS	4
GMMS	2
HES	6
HMS	46
JER	1
LES	2
LVES	10
MAY	9
MES	2
MUHS	2
MVES	1
ORME	1
PAUL	1
PMH	2
PPL	225
PVPL	151
SED	79
SEL	5
SPR	2
SVES	10
THS	2
VOC	16
WIL	3
YAR	3
YCP	4
YCV	5
YLN	2
Grand Total	917

TOTAL USERS - DECEMBER 2022	
User Library	Number of Users
AFSD	346
AJS	957
ASH	756
BAG	582
BCC	967
BEA	1,113
BMHS	2,376
BMMS	489
CJES	643
CLA	537
CON	597
COR	865
CRK	151
CSES	937
CTW	11,161
CVCL	4,920
CVHS	1,392
CVLAB	24
CVPL	5,189
CVUSD	2,156
DEL	495
DHL	543
ERU	5,974
GES	796
GHMS	672
GMMS	572
HES	509
HMS	590
JER	203
LES	599
LTS	1,203
LVES	611
MAY	809
MES	1,037
MUHS	1,877
MVES	540
ORME	101
PAUL	730
PCL	2,571
PHS	1,647
PMH	957
PPL	24,478
PVA2	1
PVCV	1
PVPL	17,423
SED	8,245
SEL	619
SHM	1
SPR	487
SUSD	271
SVES	63
TCP	17
THS	718
VOC	1,430
WIL	199
YAR	496
YCFLD	12
YCP	1,274
YCV	714
YLN	11
Total	115,654

STATISTICS: BILLS

PATRON BILLS - December 2022			
Bill Library Code	# of Bills	Bill Amount	Bill Payment Amount
Total	601	\$3,524.38	\$3,407.38
BEA	1	\$4.00	\$4.00
CTW	36	\$194.11	\$169.11
CVCL	1	\$1.00	\$1.00
CVPL	15	\$51.70	\$51.70
CVUSD	2	\$25.00	\$25.00
DEL	3	\$27.00	\$27.00
DHL	4	\$81.00	\$81.00
GMMS	1	\$1.10	\$1.10
HES	1	\$10.00	\$10.00
MVES	2	\$11.00	\$11.00
PAUL	4	\$71.97	\$71.97
PPL	487	\$2,496.35	\$2,496.35
PVPL	20	\$252.98	\$245.98
SED	15	\$238.17	\$153.17
VOC	4	\$36.40	\$36.40
YCP	5	\$22.60	\$22.60



STATISTICS: CIRCULATION

CIRCULATION - DECEMBER 2022

Station Library	Client Types	Charge Item Part B	Renew Item	Grand Total
AFSD	WorkFlows	121	6	127
AFSD Total		121	6	127
AJS	WorkFlows	689	43	732
	Aspen		25	25
AJS Total		689	68	757
ASH	SIP	626		626
	WorkFlows	103	205	308
	Aspen		2	2
ASH Total		729	207	936
BAG	SIP	292	2	294
	WorkFlows	173	345	518
BAG Total		465	347	812
BCC	SIP	572	11	583
	WorkFlows	394	420	814
	Aspen		7	7
BCC Total		966	438	1404
BEA	WorkFlows	991	650	1641
	Aspen		2	2
BEA Total		991	652	1643
BMHS	WorkFlows	21	97	118
BMHS Total		21	97	118
BMMS	WorkFlows	87	54	141
BMMS Total		87	54	141
CJES	WorkFlows	451	19	470
CJES Total		451	19	470
CLA	SIP	98	1	99
	WorkFlows	174	120	294
	Aspen		1	1
CLA Total		272	122	394
CON	SIP	438	2	440
	WorkFlows	95	124	219
	Aspen		11	11
CON Total		533	137	670
COR	SIP	405	3	408
	WorkFlows	241	253	494
	Aspen		3	3
COR Total		646	259	905
CRK	WorkFlows	145	61	206
CRK Total		145	61	206
CSES	WorkFlows	189	1	190
CSES Total		189	1	190
CTW	SIP	9002	315	9317
	WorkFlows	330	4030	4360
	Aspen		433	433
CTW Total		9332	4778	14110
CVCL	SIP	2296	53	2349
	WorkFlows	1291	1564	2855
	Aspen		161	161
CVCL Total		3587	1778	5365
CVHS	WorkFlows	23	4	27
CVHS Total		23	4	27
CVLAB	WorkFlows	229		229
CVLAB Total		229		229
CVPL	SIP	1455	6	1461
	WorkFlows	2864	2306	5170
	Aspen		74	74

CVPL Total		4319	2386	6705
CVUSD	SIP	15	1	16
	WorkFlows	97	18	115
	Aspen		1	1
CVUSD Total		112	20	132
DEL	WorkFlows	1178	105	1283
DEL Total		1178	105	1283
DHL	SIP	410	29	439
	WorkFlows	7	151	158
	Aspen		2	2
DHL Total		417	182	599
ERU	SIP	33		33
	WorkFlows	1296	116	1412
	Aspen		19	19
ERU Total		1329	135	1464
GES	WorkFlows	869	107	976
GES Total		869	107	976
GHMS	WorkFlows	21		21
GHMS Total		21		21
GMMS	WorkFlows	165	57	222
GMMS Total		165	57	222
HES	WorkFlows	527	117	644
HES Total		527	117	644
HMS	WorkFlows	42	3	45
HMS Total		42	3	45
JER	WorkFlows	117	89	206
	Aspen		2	2
JER Total		117	91	208
LES	WorkFlows	774	513	1287
LES Total		774	513	1287
LTS	WorkFlows	725	52	777
LTS Total		725	52	777
LVES	WorkFlows	214	10	224
LVES Total		214	10	224
MAY	SIP	342		342
	WorkFlows	193	219	412
MAY Total		535	219	754
MES	WorkFlows	477	90	567
MES Total		477	90	567
MUHS	WorkFlows	15	3	18
	Aspen		2	2
MUHS Total		15	5	20
MVES	WorkFlows	505	81	586
MVES Total		505	81	586
PAUL	WorkFlows	1000	524	1524
	Aspen		1	1
PAUL Total		1000	525	1525
PCL	WorkFlows	23	49	72
	Aspen		1	1
PCL Total		23	50	73
PHS	WorkFlows	40	15	55
PHS Total		40	15	55
PMH	WorkFlows	20	38	58
PMH Total		20	38	58
PPL	SIP	20683	784	21467
	WorkFlows	9953	12412	22365
	Aspen		2196	2196
PPL Total		30636	15392	46028
PVA2	WorkFlows	4	3	7
PVA2 Total		4	3	7
PVPL	SIP	16982	703	17685

STATISTICS: CIRCULATION

	WorkFlows	297	8423	8720
	Aspen		1188	1188
PVPL Total		17279	10314	27593
SED	SIP	6881	50	6931
	WorkFlows	650	3062	3712
	Aspen		770	770
SED Total		7531	3882	11413
SEL	WorkFlows	1307	262	1569
	Aspen		31	31
SEL Total		1307	293	1600
SPR	SIP	52	9	61
	WorkFlows	276	66	342
SPR Total		328	75	403
SUSD	WorkFlows	83	41	124
SUSD Total		83	41	124
SVES	WorkFlows	2	1	3
SVES Total		2	1	3
TCP	WorkFlows	3		3
TCP Total		3		3
THS	WorkFlows	800	22	822
THS Total		800	22	822
VOC	SIP	1990	19	2009
	WorkFlows	184	593	777
VOC Total		2174	612	2786
WIL	SIP	595	11	606
	WorkFlows	4	153	157
	Aspen		1	1
WIL Total		599	165	764
YAR	SIP	451	2	453
	WorkFlows	348	229	577
	Aspen		2	2
YAR Total		799	233	1032
YCFLD	WorkFlows	3	2	5
	Aspen		307	307
YCFLD Total		3	309	312
YCP	SIP	285	15	300
	WorkFlows	60	216	276
	Aspen		39	39
YCP Total		345	270	615
YCV	SIP	114	1	115
	WorkFlows	214	172	386
YCV Total		328	173	501
YLN	SIP		34	34
	WorkFlows	15	2	17
	Aspen		164	164
YLN Total		15	200	215
Grand Total		95136	45814	140950

CIRCULATION USE ITEM - DECEMBER 2022	
Station Library	Use Item Transactions
CTW	331
CVLAB	2
CVUSD	175
ERU	14
PCL	4
SED	53
SPR	174
YCP	70
YCV	108

STATISTICS: CHECKINS

CHECKINS - DECEMBER 2022	
Station Library	Total Checkins
AFSD	222
AJS	816
ASH	709
BAG	547
BCC	1,216
BEA	1,335
BMHS	155
BMMS	100
CJES	486
CLA	307
CON	501
COR	655
CRK	242
CSES	216
CTW	10,859
CVCL	4,126
CVHS	61
CVLAB	592
CVPL	4,776
CVUSD	516
DEL	1,128
DHL	508
ERU	1,574
GES	1,180
GHMS	24
GMMS	159
HES	1,007
HMS	74
JER	139
LES	1,322
LTS	1,195
LVES	637
MAY	716
MES	797
MUHS	10
MVES	752
ORME	1
PAUL	1,153
PCL	85
PHS	49
PMH	50
PPL	33,815
PVA2	2
PVPL	19,286
SED	8,282
SEL	1,303
SPR	317
SUSD	485
SVES	24
TCP	1
THS	1,128
VOC	2,521

WIL	707
YAR	782
YCFLD	57
YCP	533
YCV	1,124
YLN	265
Total	111,629

STATISTICS: OPAC

Library	Total
Default	12,868
CTW	10,231
CVCL	4,906
CVPL	2,419
Elementary	3,974
ERU	5,771
High	366
JER	253
Middle	49
PCL	444
PPL	45,929
PVPL	29,753
SED	14,941
YCFLD	6,897
YCP	13,979

STATISTICS: OVERDRIVE

USAGE TYPE: ALL DOCUMENTS			
USER ACTIVITY			
UNIQUE USERS: 5380			
CHECKOUTS		HOLDS	
Audiobook	10452	Audiobook	3573
eBook	12392	eBook	4458
Magazine	1653		

BRANCH	CHECKOUTS
YLN-Prescott	9971
YLN-Prescott Valley	4979
YLN-Cottonwood	2506
YLN-Sedona	2231
YLN-Chino Valley	884
YLN-Camp Verde	793
YLN-Sedona - Village of Oak Creek	587
YLN-Clark Memorial	203
YLN-Yavapai College	201
YLN-Congress	184
YLN-Dewey-Humboldt Town	149
YLN-Black Canyon City	142
YLN-Paulden	126
YLN-Mayer	121
YLN-Seligman	95
YLN-Bagdad	85
YLN-Cordes Lakes	81
YLN-Embry-Riddle	81
YLN-Yarnell	61
YLN-Yavapai Schools	57
YLN-Beaver Creek	32
YLN-Wilhoit	32
YLN-Ash Fork	29
YLN-Spring Valley	13
YLN-Crown King	10
YLN-Prescott College	7
YLN-Jerome	6

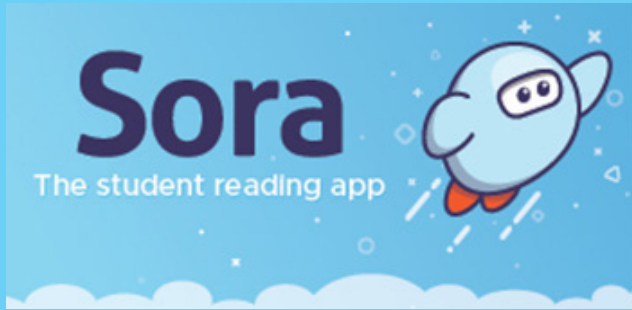
STATISTICS: OVERDRIVE RLA

CONSORTIUM	Total	audiobook	ebook	videos
Amphitheater Public Schools	1	0	1	0
Apache County Library District	26	20	6	0
Cochise County Library District	74	55	19	0
Flagstaff City-Coconino County Public Library	97	65	32	0
Gila County Library District	13	12	1	0
Little Libraries That Could	9	1	8	0
Navajo County Library District	27	23	4	0
Pima County Public Library	438	219	219	0
Southwest Valley Library Consortium	34	12	22	0
Tempe Public Library	57	17	40	0
Yuma County Library District	55	34	21	0
(blank)	115	47	68	0
Grand Total	946	505	441	0

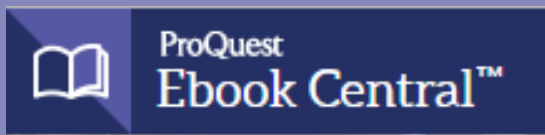
Yavapai Patron Checkouts from other RLA Systems: 3322



STATISTICS: ONLINE USAGE



Books Opened	2817
Time Read (hours)	624.88
Avg Time per Book (min)	56.98
Avg Time per Session (min)	43.46
Avg Time per User (min)	35.26
Unique Users	451



Library	Total Titles Used	Total Unique Users	Total Book Downloads	Total Chapter Downloads	Top 5 Most Used Subjects
TOTAL	454	234	87	119	Religion, Fine Arts, Literature, Social Science, History



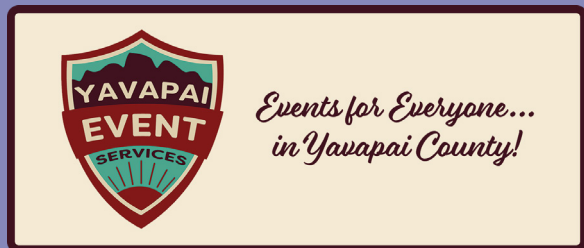
Aspen Mobile App	
Logins	127
Holds Placed	503

(validateAccount/placeHold)

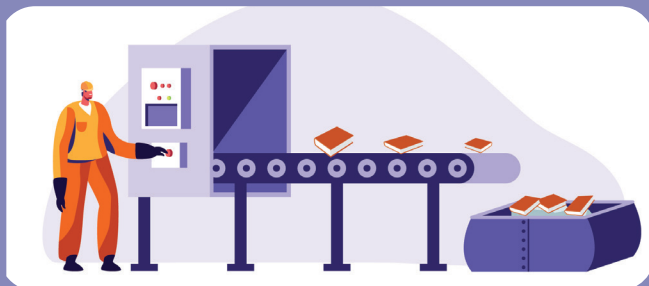
STATISTICS: ONLINE USAGE



TOTAL SESSIONS	353
Mobile Sessions	127
Avg Learning Time (min)	15.08



Month	# Programs Happening	# of Users Visiting
December	370	1457



AMH Sorter [Ethel]	
Items/Month	55020



SMS Notices

Hold Notice	4793
Manual Text	97
Overdue Notice	3677

Ash Fork Public Library	103
Bagdad Public Library	48
Black Canyon City Community Library	31
Beaver Creek Public/School Library	37
Clark Memorial Library	21
Congress Public Library	45
Cordes Lakes Public Library	94
Crown King Public Library	7
Cottonwood Public Library	834
Camp Verde Community Library	104
Chino Valley Public Library	169
Dewey-Humboldt Town Library	47
Embry-Riddle Aeronautical University Library	11
Jerome Public Library	10
Mayer Public Library	30
Paulden Public Library	70
Prescott Public Library	2231
Prescott Valley Public Library	931
Sedona Public Library	268
Seligman Public Library	24
Spring Valley Library	2
SPL in the Village	73
Wilhoit Public Library	24
Yarnell Public Library	37
Yavapai College - Prescott	45
Yavapai College - Verde	4

STATISTICS - PHONE NOTICES

iTiva

Date	Patrons	Rejected Records	Total Attempts	Total Deliveries	Patron Logins on MESSAGE call
12/1/2022	115	3	259	71	
12/2/2022	82	2	179	52	
12/3/2022	59		137	35	
12/4/2022	34		34	8	
12/5/2022	40		96	20	
12/6/2022	60	2	140	35	
12/7/2022	110	9	251	64	

Message Bee

Date	Sent	Opt-Out	Successful	Failed	Clicks	Opens
Hold Pickup						
12/5/2022	1	0	1	0	0	0
12/6/2022	3	0	3	0	0	0
12/8/2022	85	0	78	6	0	0
12/9/2022	70	0	65	5	0	0
12/10/2022	75	0	65	10	0	0
12/11/2022	57	0	47	10	0	0
12/12/2022	21	0	17	4	0	0
12/13/2022	45	0	39	6	0	0
12/14/2022	84	0	69	15	0	0
12/15/2022	86	0	65	21	0	0
Total	527	0	449	77	0	0
1st Overdue						
12/6/2022	5	0	5	0	0	0
12/9/2022	38	0	36	2	0	0
12/10/2022	18	0	15	3	0	0
12/11/2022	10	0	9	1	0	0
12/12/2022	8	0	4	4	0	0
12/13/2022	16	0	9	7	0	0
12/14/2022	19	0	13	6	0	0
12/15/2022	12	0	6	6	0	0



Total	126	0	97	29	0	0
Bill						
12/8/2022	34	0	28	6	0	0
12/9/2022	18	0	16	2	0	0
Total	52	0	44	8	0	0
Final Overdue						
12/9/2022	1	0	1	0	0	0
12/10/2022	6	0	4	2	0	0
12/12/2022	4	0	3	1	0	0
12/13/2022	4	0	4	0	0	0
12/14/2022	2	0	1	1	0	0
12/15/2022	3	0	2	1	0	0
Total	20	0	15	5	0	0
Grand Total	725	0	605	119	0	0